



FABSPEED

MOTORSPO

EXOTIC CAR PERFORMANCE SPECIALISTS

BMW E9x M3 Sec. Catbypass X-Pipe & Maxflo Exhaust

SKU: FS.BMW.E9X.XPWR/O & FS.BMW.E9X.MAXP



Estimated Install Time

4:00:00

Required Tools

*Automotive Lift or Floorjack & Stands
Metric Socket Set w/ Ratchet & Extensions
Metric Deep Socket Set
Standard Screwdriver Set
Metric Open-End Wrench Set
Torx Bit or Driver Set
Inverted Torx Bit or Driver Set
Metric Allen Key Wrench Set*

CAUTION

- *Always allow car to cool before performing any installation(s) or service(s) on it.*
- *Always be sure to work on an even and level surface when raising vehicle(s) with a jack, and support all raised vehicles with locked jack stands once elevated.*
- *Fabspeed Motorsport recommends that all installations be supervised or verified by a trained professional technician.*
- *Fabspeed Motorsport is not responsible for any personal injury or damage(s) sustained to a vehicle during installation of aftermarket performance parts.*

INSTALL GUIDE

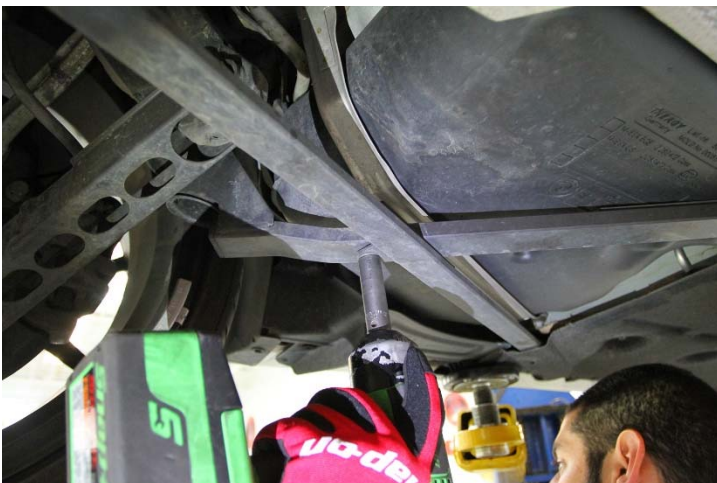
1. Raise vehicle and remove the (4) 16mm bolts and (1) 18mm bolt securing the rear subframe brace.



2. Remove the (2) 18mm bolts at the front of the rear subframe, on either side of the car.



3. Remove the (2) 13mm bolts on either side of the rear subframe brace, near the rear wheels.



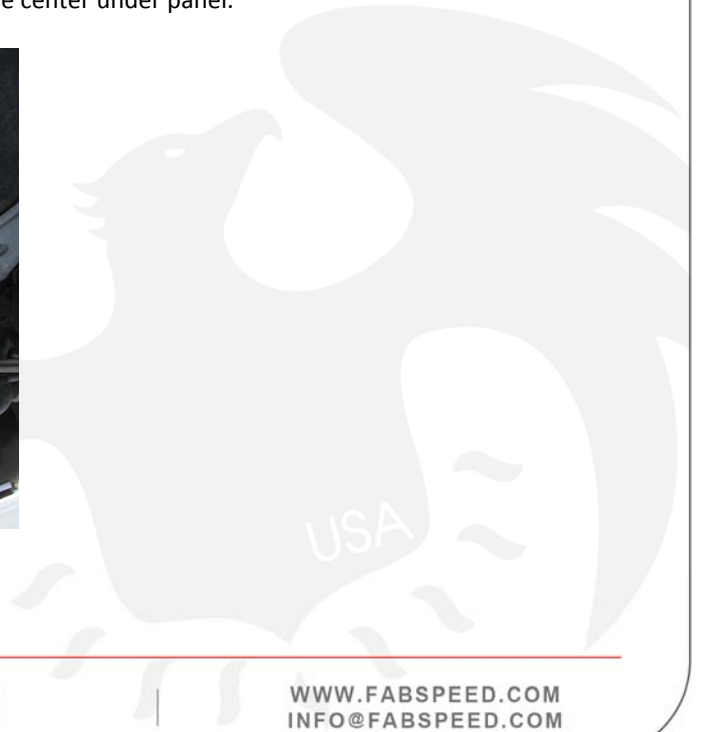
4. Remove the rear subframe brace. (NOTE: *This will come off in two pieces.*)



5. Remove the (2) 10mm bolts at the rear of the center under panel.



6. Remove the (7) 8mm bolts remaining around the perimeter of the center under panel.



7. Remove the center under panel.



8. Remove the (6) 16mm bolts and (3) 10mm bolts securing the front skid plate. (NOTE: (2) of the 16mm bolts are located behind the front under panel. They can be reached with an open-end wrench without having to remove the under panel.)



9. Remove the 16mm bolt from the center of skid plate and remove the plate.



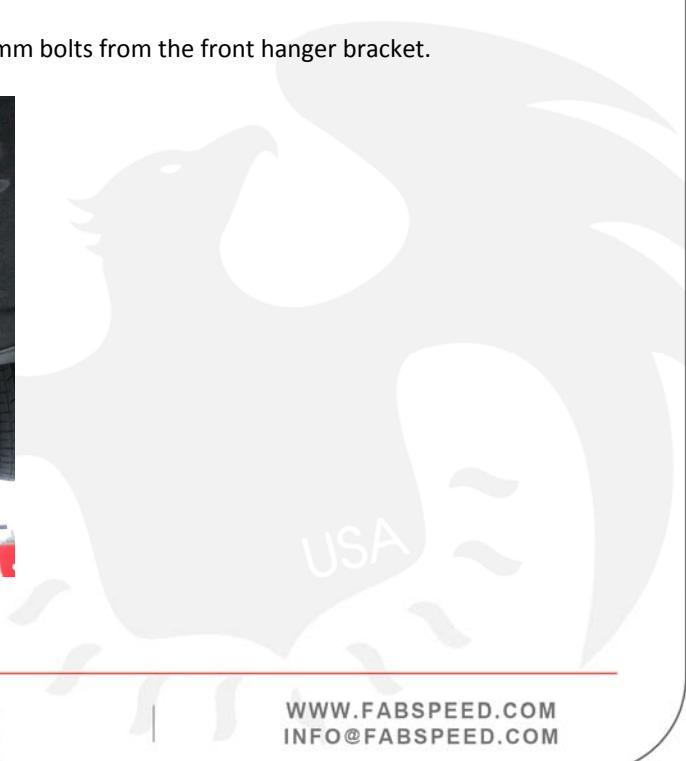
10. Using a 22mm wrench, remove the (2) O2 sensors from either side of the exhaust system.



11. Using an E12 inverted Torx bit and a 14mm wrench, remove the (2) flange bolts from each side of the exhaust system.



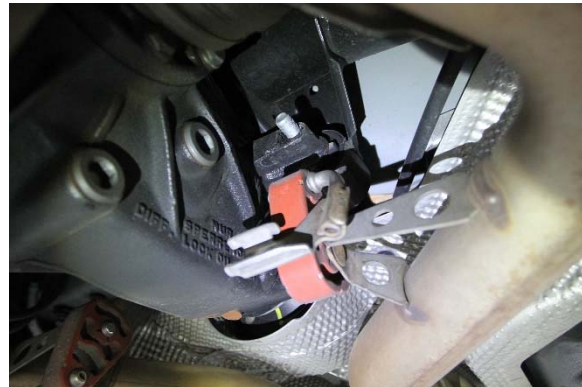
12. Support the center of the exhaust system and remove the (2) 13mm bolts from the front hanger bracket.



13. Remove the (4) 13mm bolts securing the center support plate.



14. Remove the 18mm nut from each differential mounting bolt, slide the hanger bracket off each bolt, and replace the nuts.



15. Remove the (2) 8mm bolts from the rear bumper support bracket and the (2) 13mm bolts from the top of the bracket.



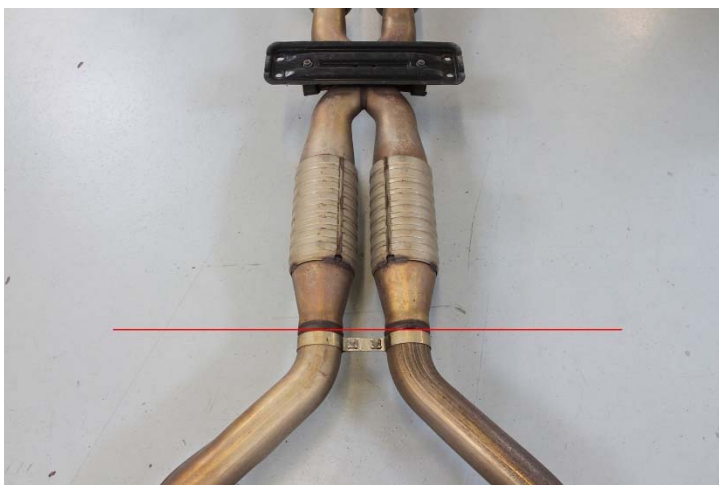
16. Remove the (2) 13mm bolts from each of the side muffler hanger brackets.



17. Lower full factory exhaust system from the vehicle.



18. Using the method of your choice, cut the factory exhaust right behind the support bracket next to the secondary catalytic converters (See red line below).



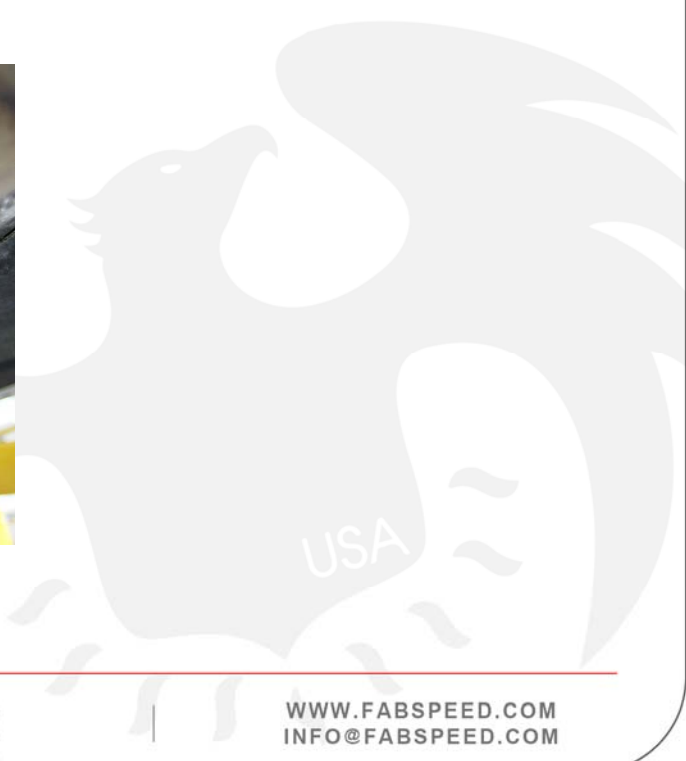
19. Pre-install the O2 sensors into the factory cat sections.



20. Re-hang the factory cats and insert and tighten the flange nuts & bolts.



21. Re-insert the hanger bracket bolts, but do not tighten yet.



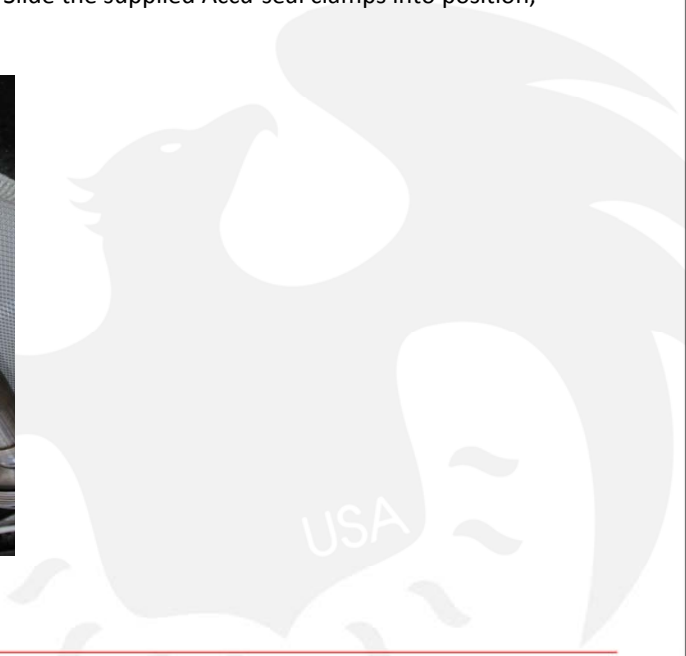
22. Using a 13mm socket, remove the center support plate from the factory x-pipe.



23. Re-install support plate on the Fabspeed X-Pipe.



24. Hang the Fabspeed X-Pipe and slide it over the factory cat pipes. Slide the supplied Accu-seal clamps into position, but do not tighten yet.



25. Re-insert the (4) bolts and secure the support plate into place.



26. Using a 15mm socket, tighten the Accu-seal clamps.



27. Using a 13mm socket, tighten the hanger bracket bolts.



28. Pre-install supplied mounting brackets onto the front of the Fabspeed muffler tabs.



29. Remove the factory rubber hangers and install on the front of the Fabspeed mufflers.



30. Remove the rear hanger bracket and hangers and re-install on the car. Insert Fabspeed rear hanger posts into the hangers.



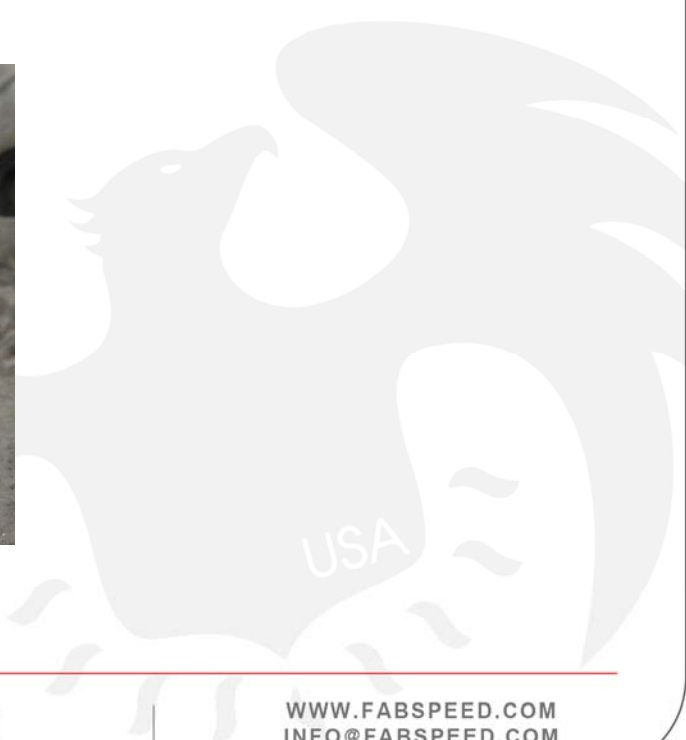
31. Remove the factory side muffler brackets and grounding straps and re-install on the Fabspeed mufflers.



32. Hang the Fabspeed rear mufflers under the vehicle.



33. Re-attach the side mounting brackets and grounding straps.



34. Re-attach the front hangers to the differential mounting bolts.



35. Tighten ball clamps using a 13mm socket.



36. Slide tips onto muffler outlets, position, and tighten.



37. Perform steps 1 through 14 to re-install all underbody panels and complete installation.



If you have any questions, comments, or concerns related to your product, please contact us!

INSTALL GUIDE

