



FABSPPEED

MOTORSPOORT

EXOTIC CAR PERFORMANCE SPECIALISTS

Ferrari F430 Sport Headers



Estimated Install Time

6:00:00

Required Tools

Commercial Lift (or Hydraulic Floor Jack & Stands)
Socket Driver or Impact Wrench
Swiveling Socket Adaptor
24" Socket Extension
13mm & 22mm Sockets
8mm, 17mm, & 22mm Wrenches
Philips-head Screwdriver
3mm Hex/Allen Driver or Bit
Hooked Pick Tool
Small Flashlight (Optional)

CAUTION

- Always allow car to cool before performing any installation(s) or service(s) on it.
- Always be sure to work on an even and level surface when raising vehicle(s) with a jack, and support all raised vehicles with locked jack stands once elevated.
- Fabspeed Motorsport recommends that all installations be supervised or verified by a trained professional technician.
- Fabspeed Motorsport is not responsible for any personal injury or damage(s) sustained to a vehicle during installation of aftermarket performance parts.

INSTALL GUIDE

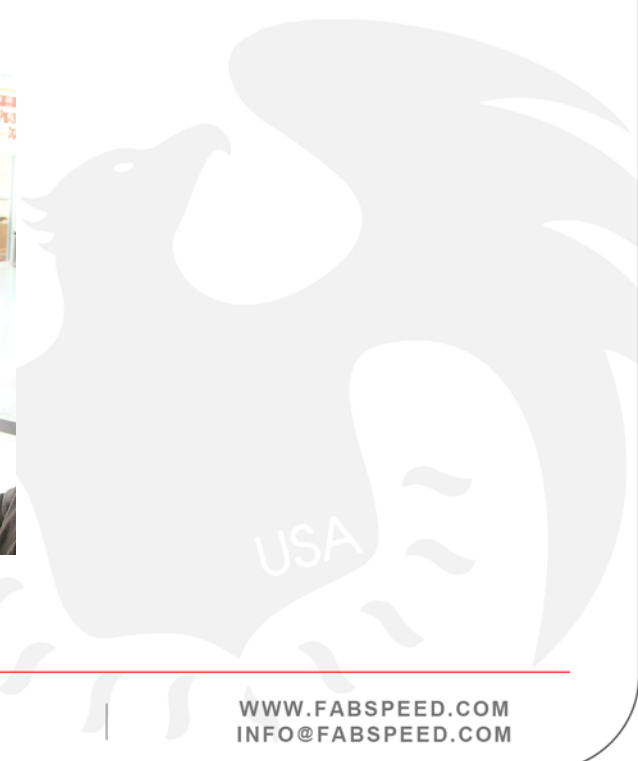
1. Raise car off of the ground and remove the rear wheels.



2. Remove (11) fender liner screws from each side of the rear wheel wells.



3. Remove lower rear portion of fender liners.



4. Remove (12) fasteners securing the plastic covers one the sides of the engine bay.



5. Use a hooked pick to open and remove the clip, and “pop off” the engine cover support piston (*do this one side at a time*).



6. While holding the rear portion out of the way, remove the main forward section of the plastic covers.



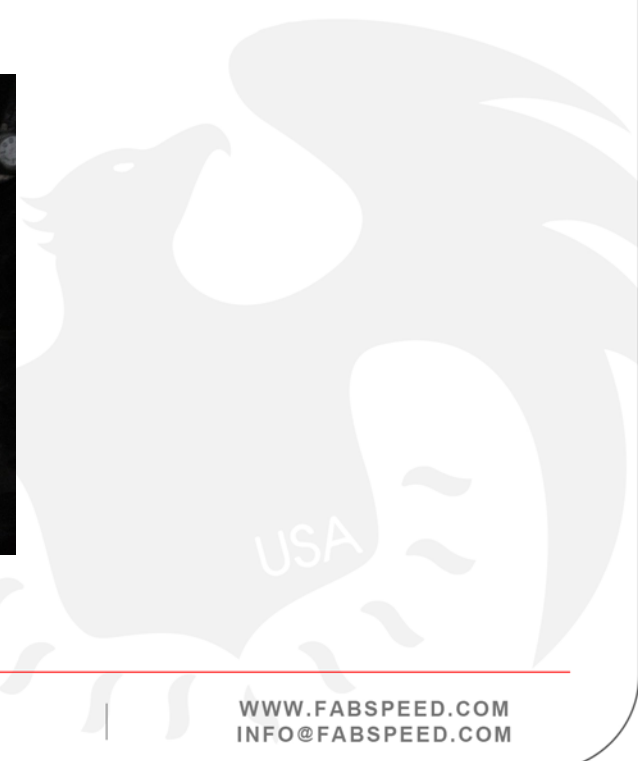
7. Remove the 8mm bolts beneath the side intake tubing on both sides. *(This will free the main fender liners.)*



8. Remove the remaining portions of the fender liners on both sides.



9. Remove the 17mm EGT sensor.



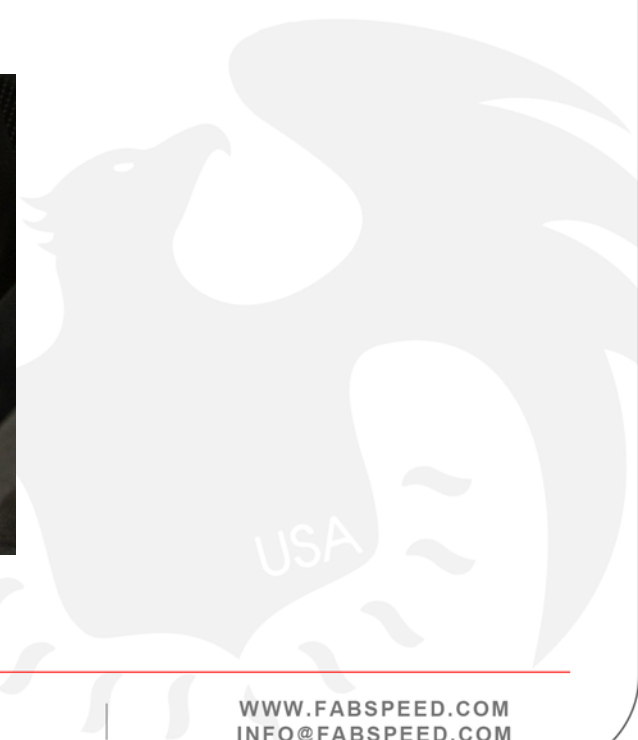
10. Remove 22mm O₂ sensor from factory header.



11. Remove the (3) flange bolts from the header outlets on either side of the car.



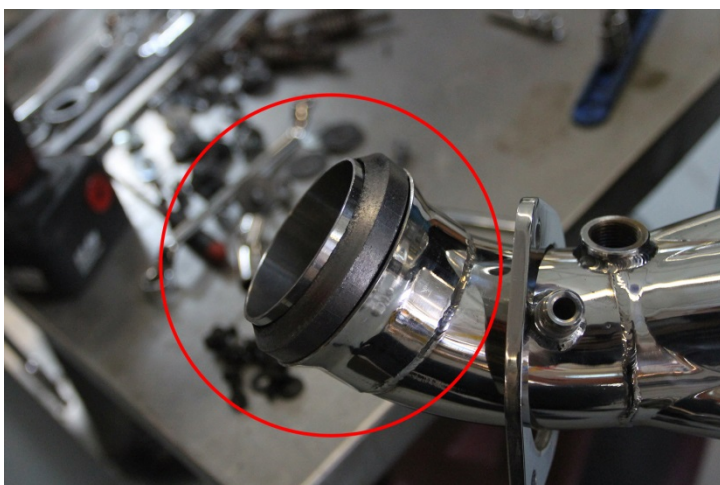
12. Remove the (8) nuts securing the headers to the engine on either side.



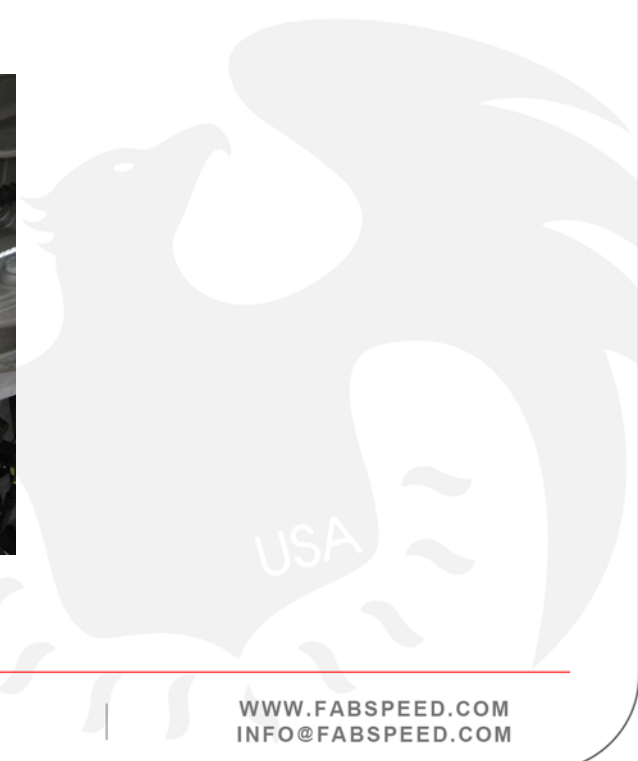
13. Remove factory headers from vehicle.



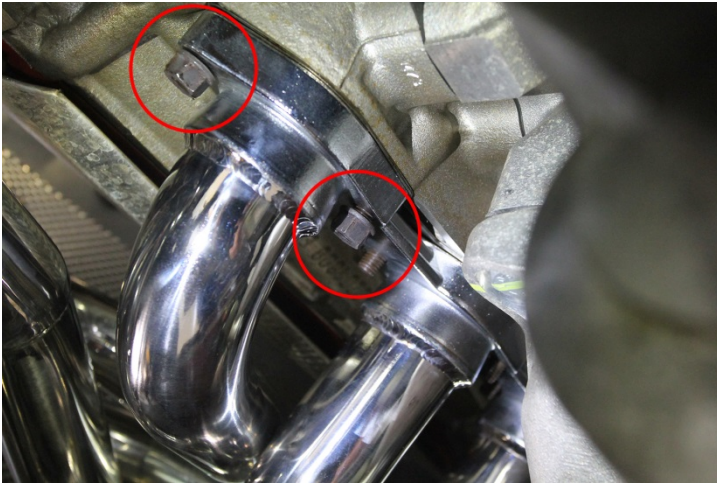
14. Place factory outlet gasket on new Fabspeed header outlet.



15. Fit Fabspeed headers onto vehicle and finger-tighten all nuts/bolts.



16. Tighten all connecting nuts/bolts and re-assemble remaining components by following steps 1-10 in reverse order.



17. Enjoy and show off your new Fabspeed Motorsport headers!

If you have any questions, comments, or concerns related to your new part(s), please contact us!



FABSPEED
MOTORSPORT
EXOTIC CAR PERFORMANCE SPECIALISTS

INSTALL
GUIDE