



FABSPPEED

MOTORSPO

EXOTIC CAR PERFORMANCE SPECIALISTS

Porsche 958 Cayenne Secondary Catbypass Pipes



Estimated Install Time

1:00:00

Required Tools

Commercial Lift (or Hydraulic Floor Jack & Stands)

Socket Driver or Impact Wrench

13mm Socket

16mm Socket

13mm Wrench

16mm Wrench

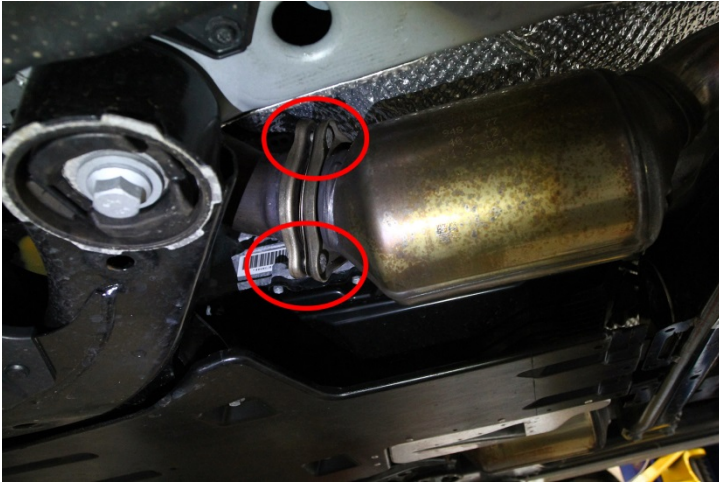
Swivel Socket Adapter (recommended)

CAUTION

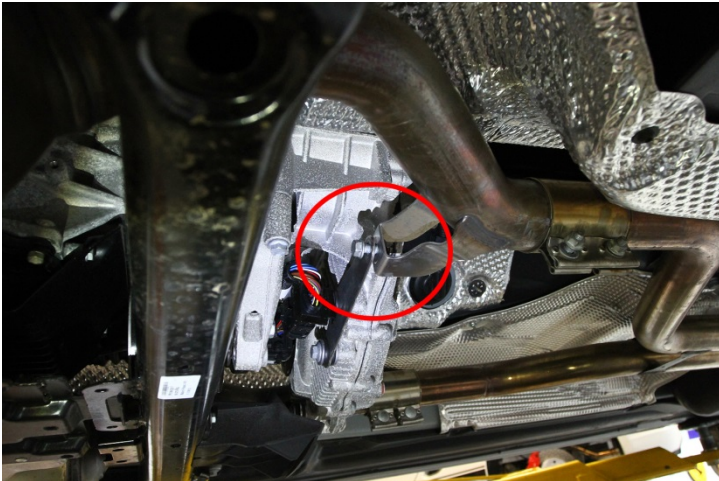
- Always allow car to cool before performing any installation(s) or service(s) on it.
- Always be sure to work on an even and level surface when raising vehicle(s) with a jack, and support all raised vehicles with locked jack stands once elevated.
- Fabspeed Motorsport recommends that all installations be supervised or verified by a trained professional technician.
- Fabspeed Motorsport is not responsible for any personal injury or damage(s) sustained to a vehicle during installation of aftermarket performance parts.

INSTALL GUIDE

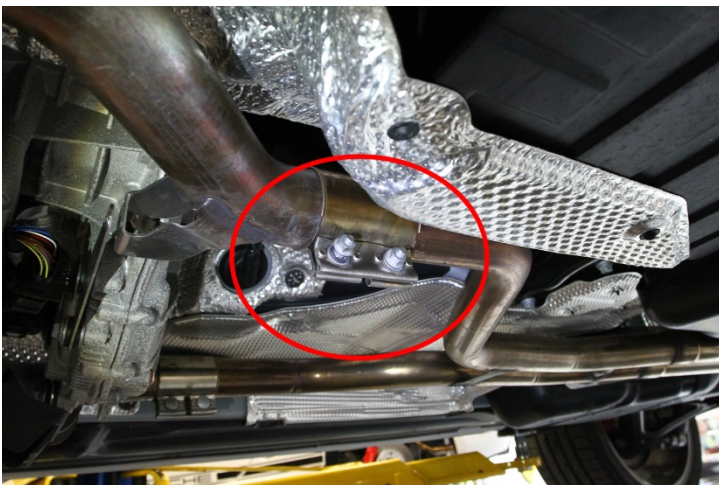
1. Remove (3) flange bolts on each of the factory secondary catalytic converters.



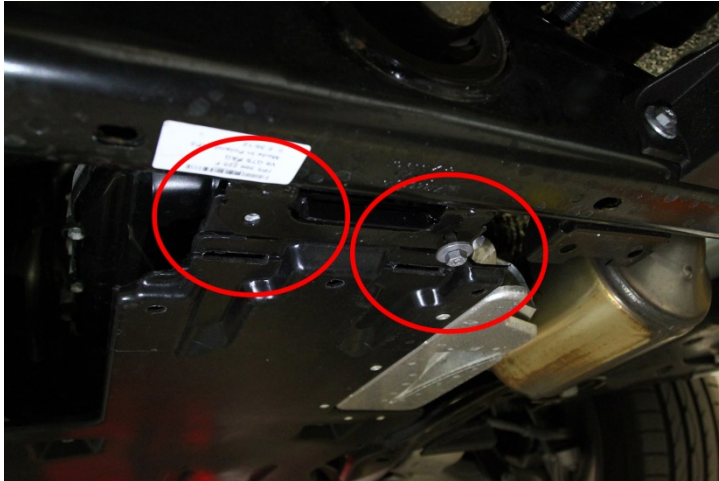
2. Remove outer hanger bracket bolts from each side.



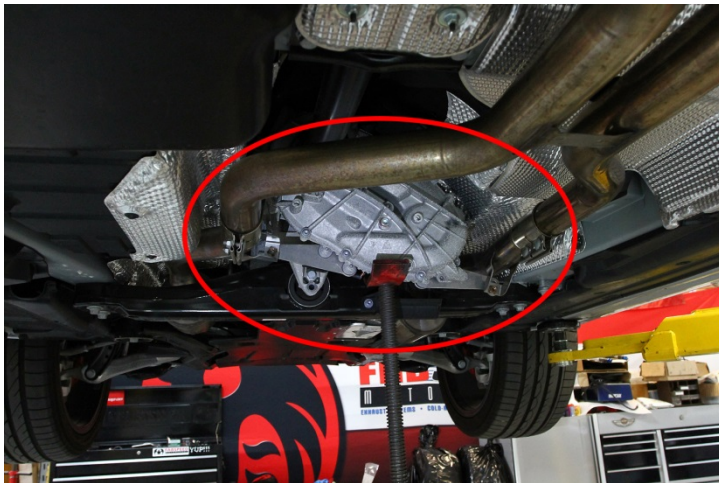
3. Loosen (*do not remove*) slide clamp bolts on both sides.



4. Remove (2) bolts securing cross member to the front undertray and remove the small clamping section.



5. Support transfer case assembly from below.



6. Remove (2) mounting bolts holding transfer case to crossmember.



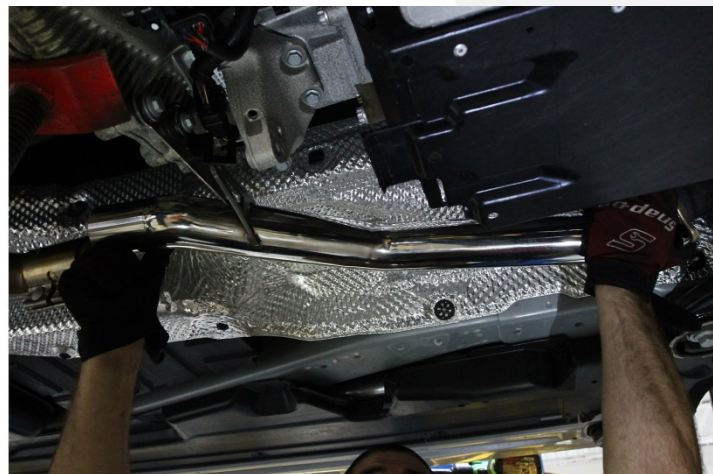
7. Remove (2) bolts from either side of crossmember and remove crossmember.



8. Remove factory secondary catalytic converters.



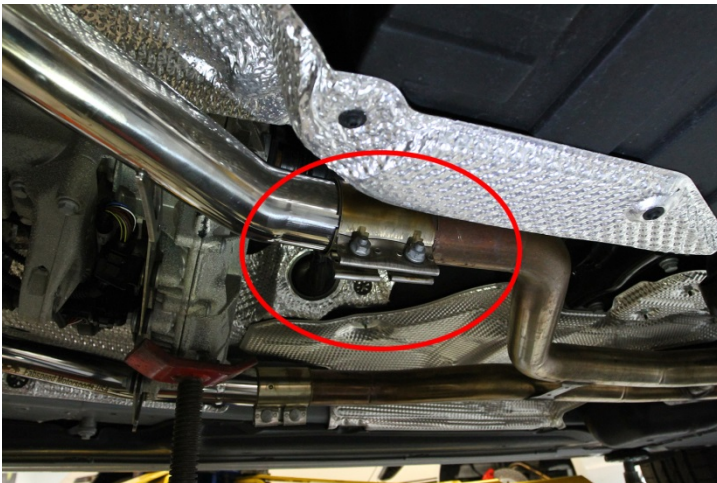
9. Remove factory gasket and re-use to fit Fabspeed Secondary Catbypass Pipes in place.



10. Once Fabspeed pipes are aligned, tighten (3) flange bolts on either side.



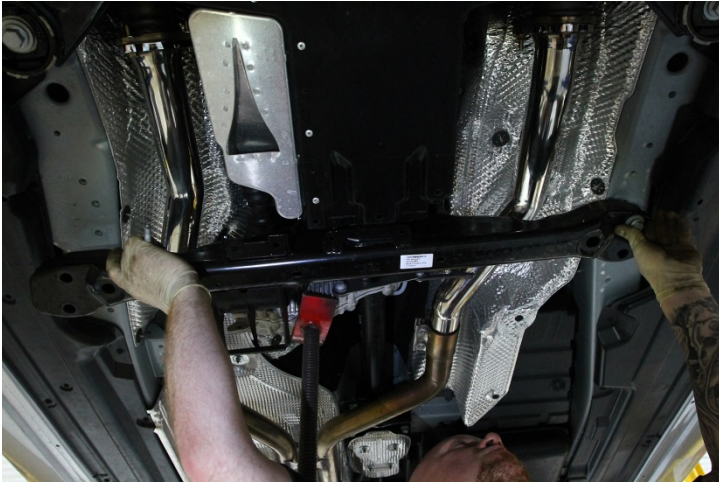
11. Position and hand-tighten slide clamps on both sides.



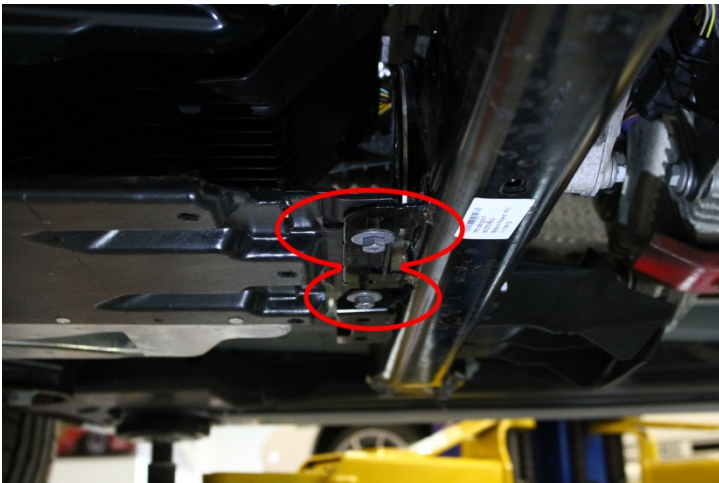
12. Re-insert and tighten bolts on both hanger brackets.



13. Re-attach crossmember and tighten all (4) bolts.



14. Re-attach clamping plate to secure the undertray to the cross member.



15. Fully tighten slide clamps and double-check all connections.



16. Enjoy and show off your new Fabspeed Motorsport performance part(s)!

If you have any questions, comments, or concerns related to your new part(s), please contact us!

