



# FABSPEED

## MOTORSPO

EXOTIC CAR PERFORMANCE SPECIALISTS

### **Porsche 997 Turbo Maxflo Performance Exhaust**

SKU: FS.POR.997T.MAX



#### **Estimated Install Time**

4:00:00

#### **Required Tools**

*Metric Socket Set w/ Ratchet & Extensions*

*Metric Deep Socket Set*

*Standard Screwdriver Set*

*Metric Open-End Wrench Set*

*Torx Bit or Driver Set*

*Metric Allen Key Wrench Set*

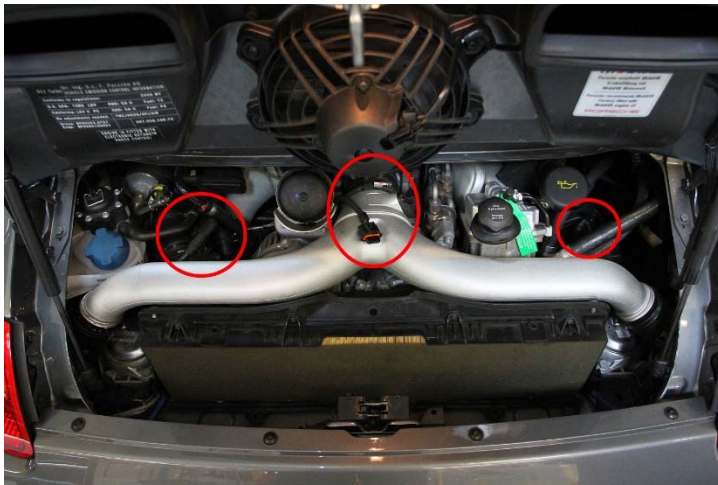
#### **CAUTION**

- *Always allow car to cool before performing any installation(s) or service(s) on it.*
- *Always be sure to work on an even and level surface when raising vehicle(s) with a jack, and support all raised vehicles with locked jack stands once elevated.*
- *Fabspeed Motorsport recommends that all installations be supervised or verified by a trained professional technician.*
- *Fabspeed Motorsport is not responsible for any personal injury or damage(s) sustained to a vehicle during installation of aftermarket performance parts.*

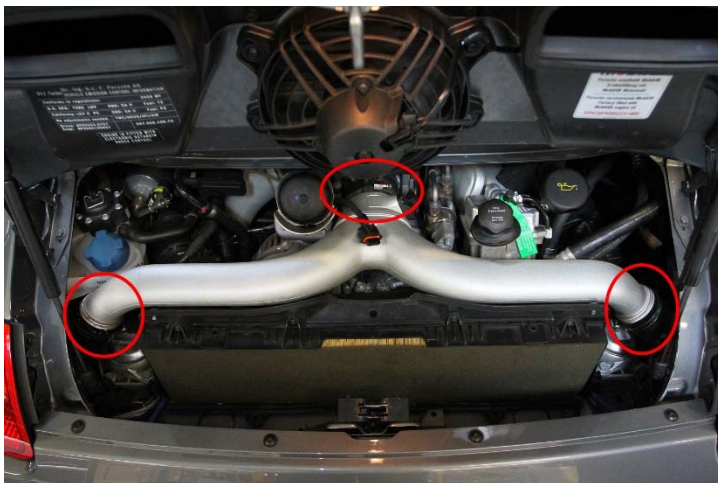
1. Remove factory air filter cover.



2. Unplug the (3) sensors circled in red.



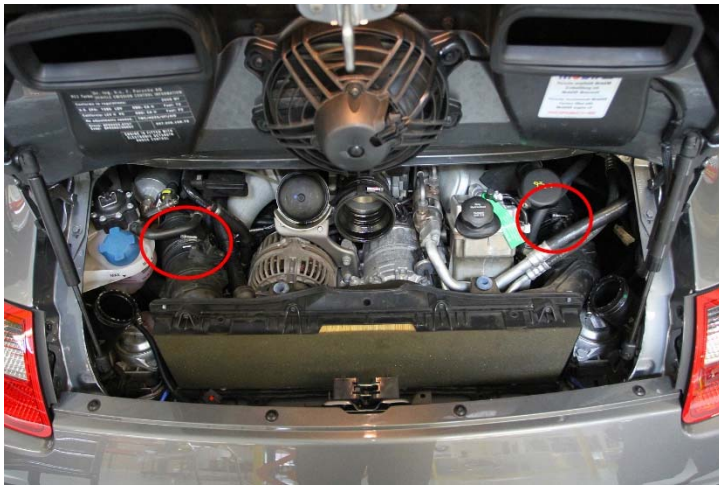
3. Using a 7mm socket or a flat head screwdriver, loosen the (3) hose clamps circled in red.



- Carefully separate the intake y-pipe from the throttle body boot and remove from vehicle.



- Using a 7mm socket, loosen the (2) hose clamps circled in red.



- Carefully separate the hose from the back of the factory air box.



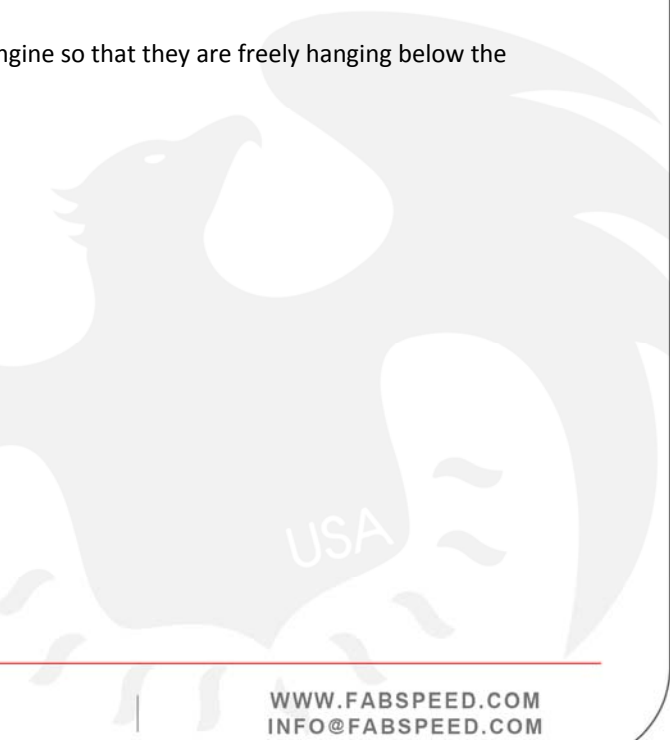
7. Remove factory air filter and housing from the vehicle.



8. Unplug the (2) O2 sensor wires from either side of the engine bay. (*One black and one blue on each side.*) Unclip the wires from the factory clips.



9. Raise the vehicle and fish the O2 sensor wires down through the engine so that they are freely hanging below the vehicle.



10. Using a 14mm wrench, remove the EGT sensors from the turbos.



11. Using a 13mm wrench, remove the (4) nuts securing the catalytic converter to the turbo.



12. Using an 8mm wrench, remove the bolt securing the outside of the turbo heat shield.



13. Using a 13mm socket and extension, loosen and remove the factory tips.



14. Using a 6mm Allen bit, loosen and remove the (2) band straps securing the factory muffler.



15. Lower and remove the factory muffler from the vehicle (NOTE: *This may require some prying, patience, and a second person.*)



16. Using a 22mm wrench, remove the O2 sensors from the factory cats and install them on the Fabspeed Sport Cats



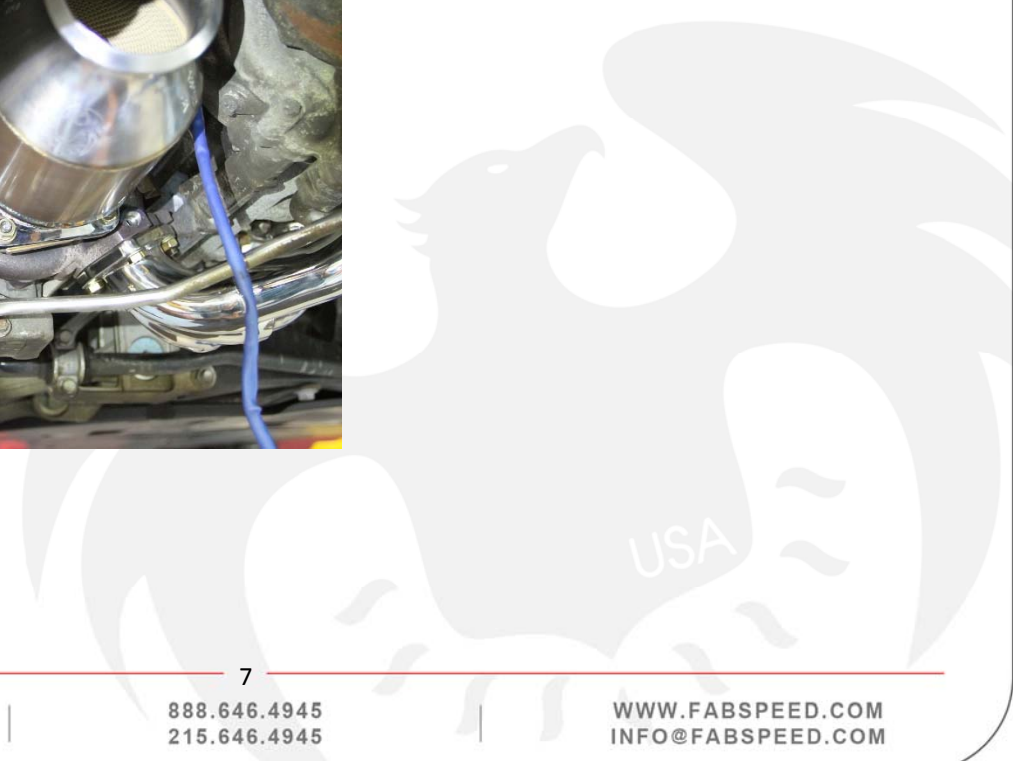
17. Hang the Fabspeed Sport Cats on the turbo studs and tighten the (4) flange nuts.



18. Re-insert and tighten the bolt securing the turbo heat shield on either side of the car.



INSTALL GUIDE



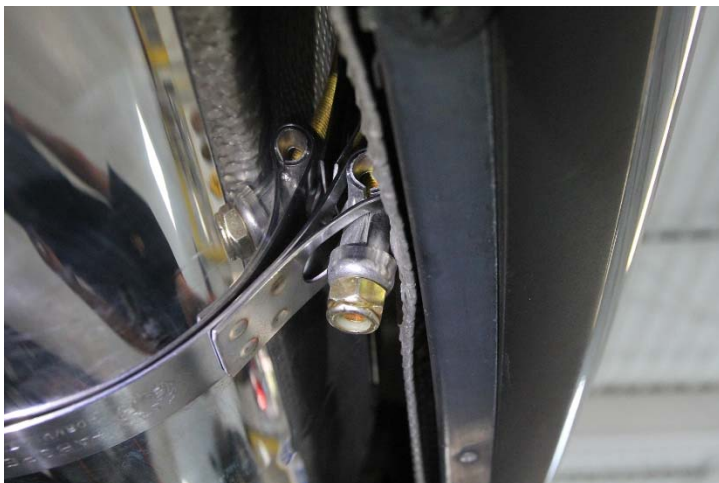
19. Hang Fabspeed muffler and secure into place with the supplied v-band clamp and band clamp.



20. Using an 11mm deep socket, tighten the v-band clamp.



21. Using a 13mm socket, tighten the band clamp.



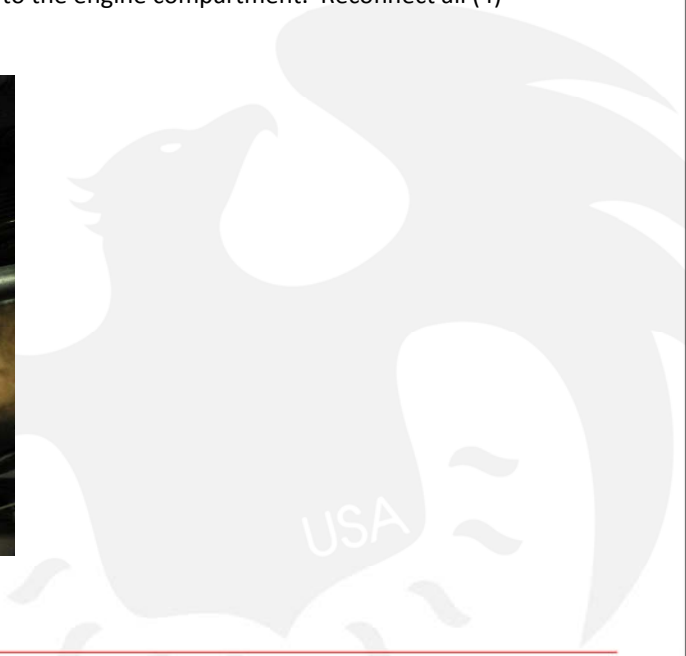
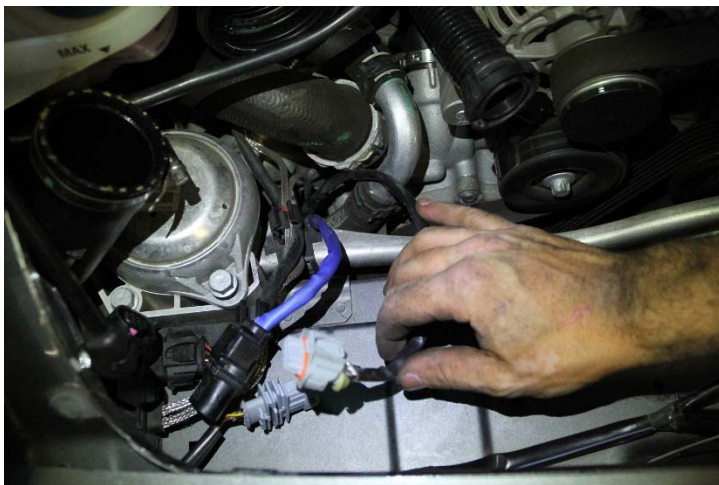
22. Slide the Fabspeed tips into the bumper cutouts and on to the muffler outlets.



23. Align tips to desired position and tighten the clamps in the back with a 13mm socket.



24. Lower the car back down and fish the O2 sensor wires back up in to the engine compartment. Reconnect all (4) plugs.



25. Re-install the intake and air box by following steps 1 through 7 in reverse order to complete installation.

*If you have any questions, comments, or concerns related to your product, please contact us!*

INSTALL  
GUIDE

