



FABSPPEED

MOTORSPORT

EXOTIC CAR PERFORMANCE SPECIALISTS

Porsche 997.2 GT3RS Center Muffler Bypass Pipe



Estimated Install Time

2:00:00

Required Tools

Commercial Lift (or Hydraulic Floor Jack & Stands)

Pole Jack

Socket Driver or Impact Wrench

Swivel Socket Adapter

10mm, 13mm & 15mm Sockets

13mm Wrench

11mm Wrench

6mm Allen Driver/Bit

Small Flashlight (Optional)

CAUTION

- Always allow car to cool before performing any installation(s) or service(s) on it.
- Always be sure to work on an even and level surface when raising vehicle(s) with a jack, and support all raised vehicles with locked jack stands once elevated.
- Fabspeed Motorsport recommends that all installations be supervised or verified by a trained professional technician.
- Fabspeed Motorsport is not responsible for any personal injury or damage(s) sustained to a vehicle during installation of aftermarket performance parts.

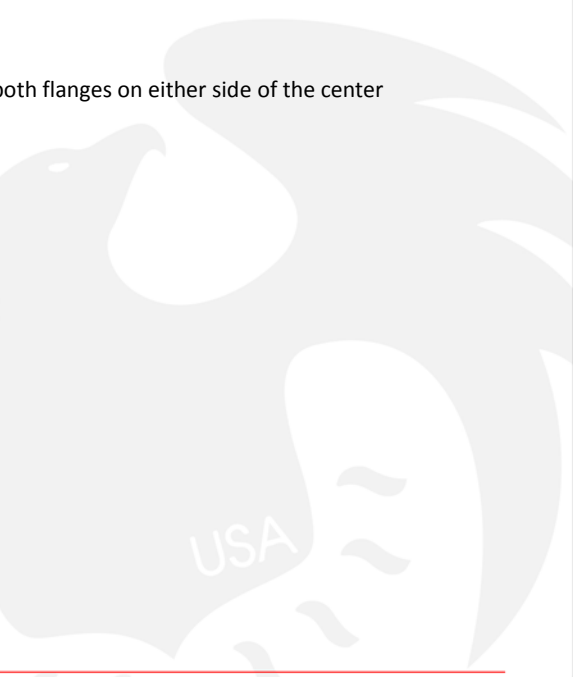
1. Lift car and spray any corroded joints with rust penetrant spray.
2. Using a 6mm Allen bit, remove (2) bolts securing muffler hanger band clamps.



3. Slide band brackets toward the outsides of the muffler.



4. Using a 13mm swivel socket and extension, remove the (5) nuts securing both flanges on either side of the center muffler.



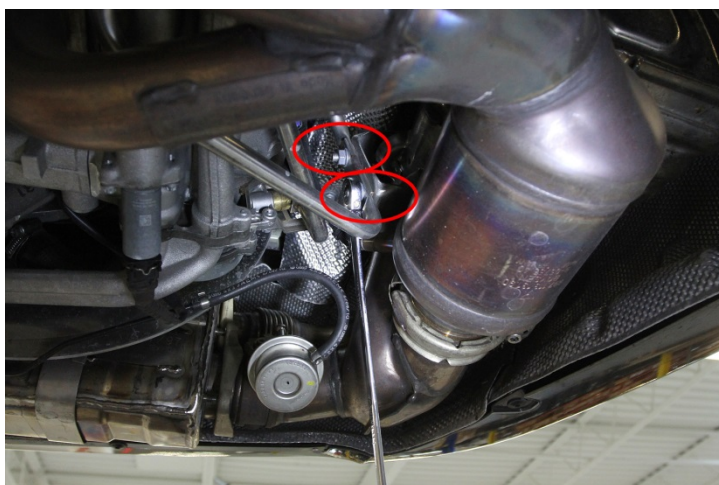
- 5. Support center muffler using a pole jack.



- 6. Using a 6mm Allen, loosen and remove clamp securing the catalytic converter to the muffler inlet pipe.



- 7. Using a 13mm wrench, remove (2) nuts securing side muffler to mounting bracket.



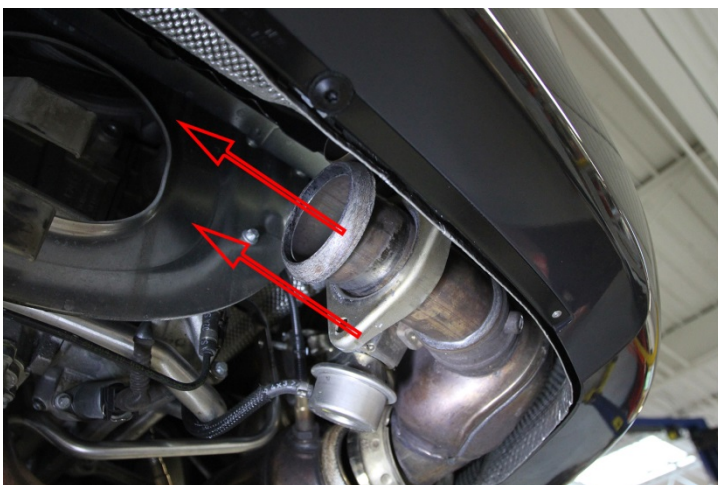
8. Push side muffler towards the rear and outside of the car to separate the inlet pipes from each side of the center muffler.



9. Remove center muffler from vehicle.



10. Remove all ball gaskets and flanges from factory muffler inlet pipes.



11. Using an 11mm wrench, remove the (2) bolts securing the factory muffler hanger bracket.



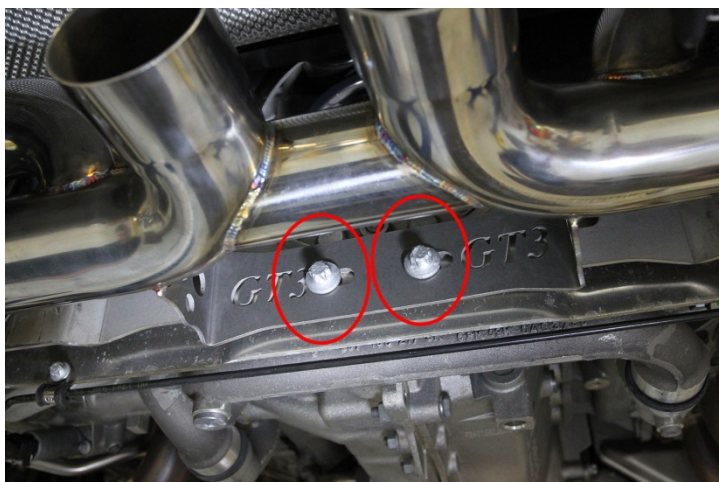
12. Slide supplied Accu-Seal clamps over the Fabspeed pipe ends and insert pipe into vehicle.



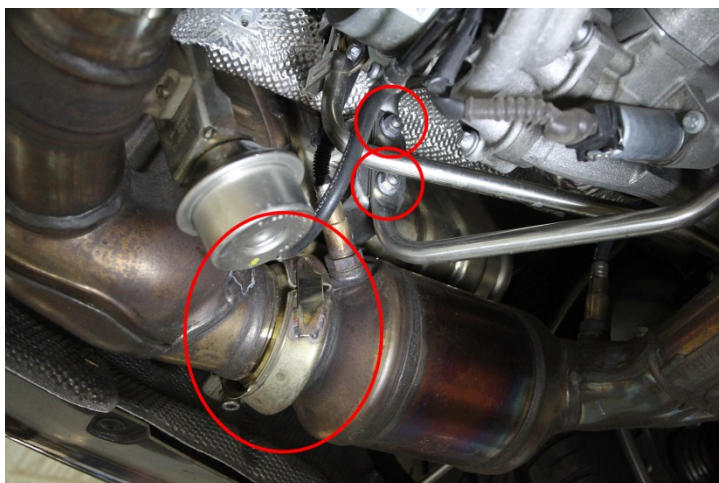
13. Slide the factory inlet pipes into the Fabspeed pipes on either side.



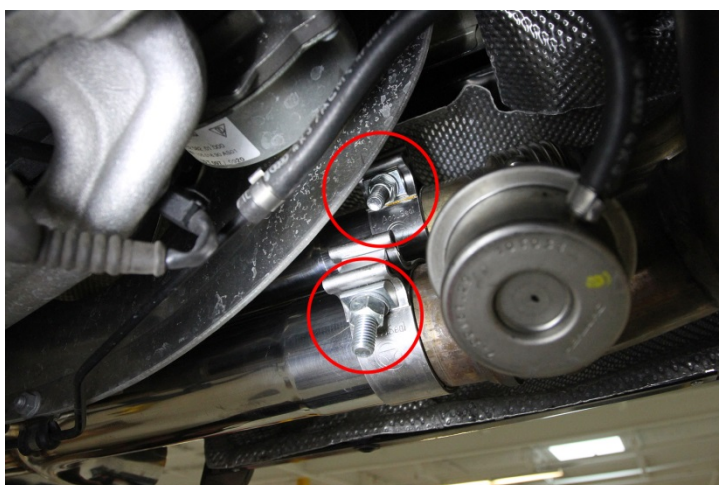
14. Re-insert 11mm bolts through factory muffler bracket and hand-tighten. *(Do not fully tighten at this point.)*



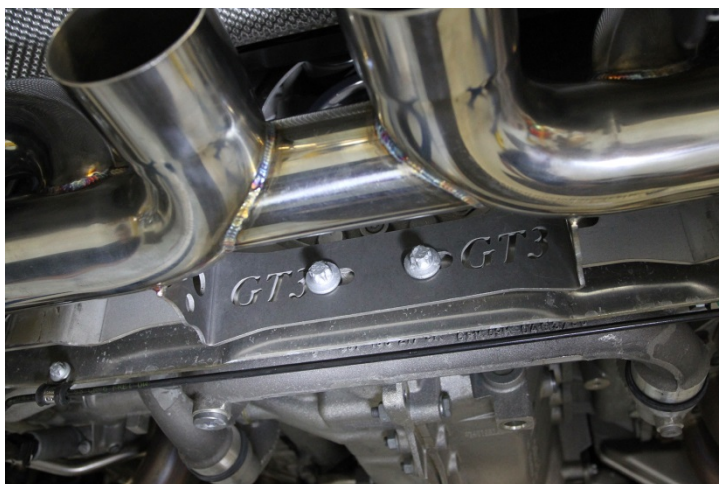
15. Re-apply factory clamps and tighten 6mm Allen bolts. Re-apply (2) 13mm nuts to side muffler brackets on each side of the vehicle.



16. Using a 15mm socket, tighten all (4) Accu-Seal clamps (2 on each side of the exhaust).



17. Finish tightening the (2) 11mm bolts securing the Fabspeed Bypass Pipe to the factory center muffler bracket.

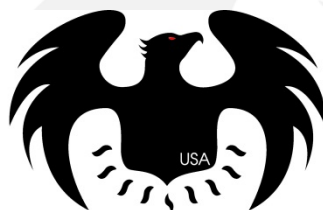


18. Slide Fabspeed tips over outlet pipes, align the tips, and tighten them in place using a 13mm socket.



19. Enjoy and show off your new Fabspeed Motorsport exhaust system!

If you have any questions, comments, or concerns related to your new part(s), please contact us!



FABSPEED
MOTORSPORT
EXOTIC CAR PERFORMANCE SPECIALISTS